

WDG-HPII

Flue Gas Oxygen Analyzer

Thermox[®]
The right analyzer for your application

SERIES 2000 CONTROL UNIT

Display:

Four line x 20 character vacuum fluorescent. Displays combinations of oxygen, time and date, cell temperature, user programmable text, thermocouple mV or cell mV. Password protection, programmable pressure compensation and context-sensitive help are also provided.

Recorder Output:

Two isolated linear current outputs. Select O₂, cell temperature, thermocouple mV or cell mV. Each output can be 4-20 mA, 0-20 mA and is fully scalable. Hold or track during calibration and select degree of damping. Maximum load 1200 ohms.

Alarms:

Two independent oxygen alarms, each high or low selectable. One alarm can be assigned as oxygen, calibrate or verify. Set relays to energize or de-energize on alarm. Contact rating max. 30VA, 30V max. non-inductive load.

Diagnostics:

Watchdog timer and service alarms. System test for A/D, RAM, EEPROM, and keypad. Display line 4 reserved for full text error and diagnostic messages. Twenty entry event log.

Communications:

RS-485 2-way addressable

Environment:

Ambient Temp.: 14°F to 122°F (-10°C to 50°C)
Relative Humidity: 10% to 80%, non-condensing

System Compliance:

EMC Directive 89/336/EEC

- Immunity Standard, EN 50082-2, Heavy Industrial
 - Emissions Standard, EN 55011, Equipment Class: Industrial, Scientific, and Medical
- Low Voltage Directive 73/23/EEC
- Safety requirement for electrical equipment for measurement, control and laboratory use, EN 61010-1 (IEC 1010-1)

Enclosure:

Choice of general purpose wall mount, general purpose 19" rack mount, general purpose panel mount, weatherproof NEMA 4 (IP 56) wall/panel mount, and stainless steel weatherproof NEMA 4X (IP 56) wall/panel mount. All are UL Listed for NEC Class I, Division 2 areas. Purged and explosion-proof versions also available.

Calibration:

Oxygen cell lifetime extender. Calibrate or verify calibration. Store last calibration and verification data. Selectable calibration gas run time and process recovery time. Timed automatic calibration with optional Remote Calibration Unit.

Power Requirements:

Nominal 95-230 VAC, ±10%, 47-63 Hz.

Power Dissipation:

75 VA max.



SENSOR

Principle of Operation:

Convective oxygen analyzer using a zirconium oxide electrochemical cell for oxygen measurement. Completely field serviceable.

Display Range:

Oxygen: 0.1-100%

Output Range:

Oxygen: From 0-1% to 0-100%

Accuracy:

±0.75% of measured value or ±0.05% oxygen, whichever is greater

Response:

< 3 sec. to calibration gas. 63% of process step change <16 secs. with 24" probe

Drift:

< 0.1% of cell output per month (< 0.005% O₂ per month with 2% O₂ applied)

Flue Gas Temperatures/Probes:

- to 1300°F (704°C) with 316 SS
- to 1875°F (1024°C) with RA330
- to 2800°F (1537°C) with mullite

Probe Lengths:

24", 36" and 48" (0.60m, 0.91m and 1.21m)

Max. Sample Dewpoint:

450°F (232°C) standard. High dewpoint sensors are available for sample dewpoints up to 700°F (371°C).

Sample Pressure:

±2 psig: no adjustments required
±2 to ±9 psig: software selectable
±10 psig and above: consult factory

Environment:

Ambient Temp.:
-5°F to 160°F (-20°C to 71°C),
-5°F to 140°F (-20°C to 60°C) w/Div. 2 Option



Relative Humidity:

10% to 90%, non-condensing

Enclosure:

General purpose, weather resistant, stainless steel. Explosion-proof and purged versions are optional.

Power Requirements:

115 VAC, ±10%, 47-63 Hz., 600 VA max. (650 VA max. w/floor mount option);
230 VAC, ±10%, 47-63 Hz., 1850 VA max. (1900 VA max. w/floor mount option)

Calibration Gas Requirements:

Use calibration gases @ 10 psig, 1.5 scfh (0.70 kg/cm², 0.7 L/min.)
O₂ Span Gas:
Air or from 1.0% to 100% O₂, balance N₂
O₂ Zero Gas:
2% or from 0.1% to 10% O₂, balance N₂

Excess Fuel Software Option:

Extends operating range of analyzer from excess oxygen only to include substoichiometric conditions (excess fuel). Allows two-point calibration in excess fuel range. Measure, display, and provide alarms and analog outputs as follows:

Display Options:

Excess fuel, combustibles, oxides/fuel, fuel/oxides, combined excess oxygen/excess fuel (combustibles).

Display Range: 0-50% excess fuel

Output Range: 0-1% to 0-50% excess fuel

Alarms: Standard alarms can be used for high or low excess fuel levels.

AMETEK
PROCESS & ANALYTICAL INSTRUMENTS DIVISION

150 Freeport Road, Pittsburgh, PA 15238
Tel: (412) 828-9040 Fax: (412) 826-0399
www.thermox.com

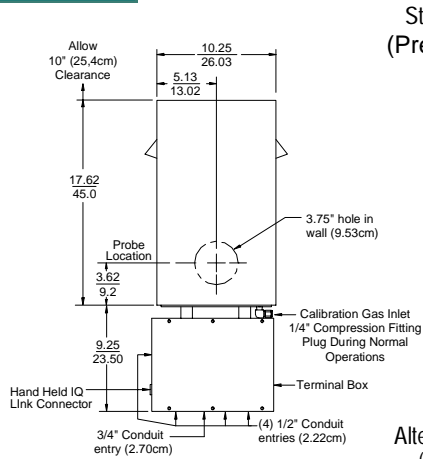
TQM
committed to your success

ITSAI
100% ISO 9001:2000

CE
UL LISTED

TA-LUFT
APPROVED

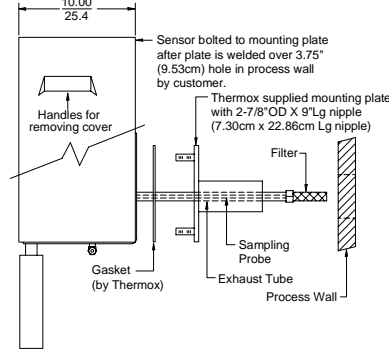
SENSOR



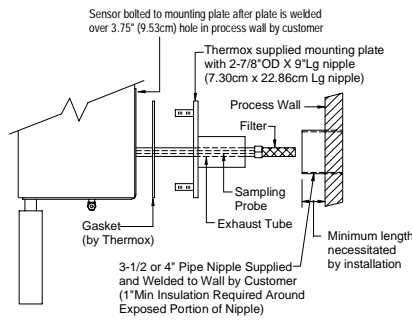
Notes:
1. Weather Resistant Enclosure.
2. Weight: 37.6lbs (17Kg)

INCHES
CM

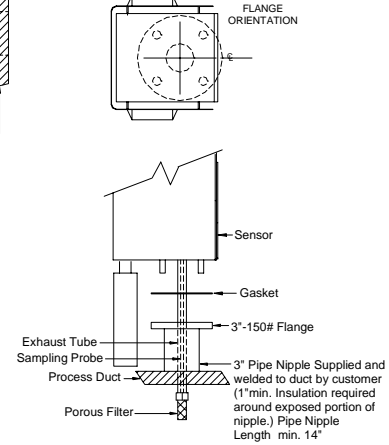
**Standard Mounting
(Preferred Method)**



**Alternate Nipple Mounting
(with standard mtg parts)**

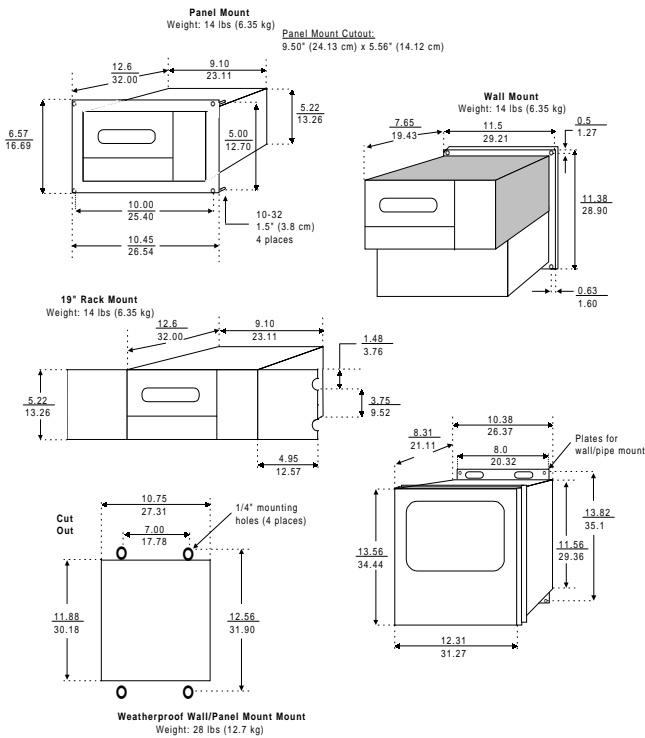


**Alternate Floor Mounting
(Specify Floor Mount Sensor when ordering)**



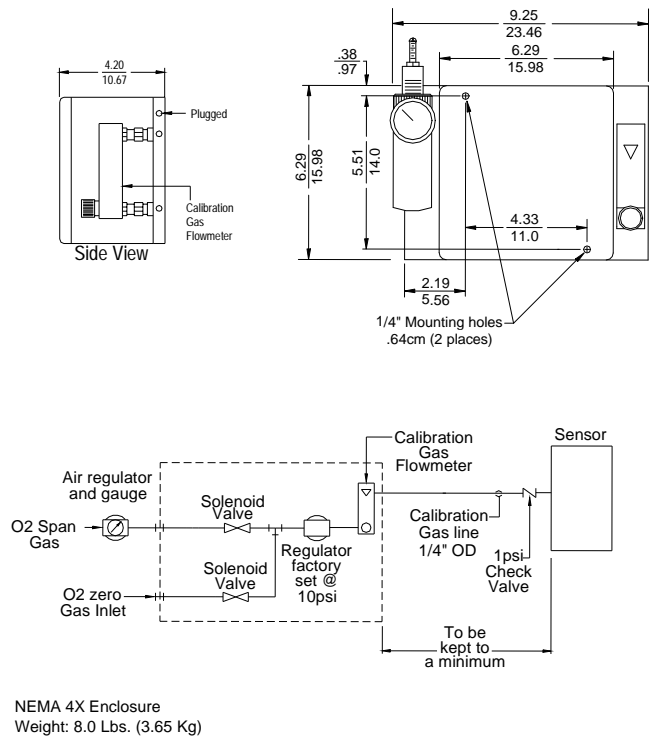
CONTROL UNIT

INCHES
CM



REMOTE CALIBRATION UNIT

INCHES
CM



NEMA 4X Enclosure
Weight: 8.0 Lbs. (3.65 Kg)

Specifications contained herein are subject to change without notice. Since it is impossible to anticipate or control the many different conditions under which this information or our products may be used, AMETEK cannot guarantee the applicability and accuracy of the information or the suitability of our products in any given situation. Printed in the U.S.A. 2002-01, by AMETEK, Inc.

NOTES:

1. All static performance characteristics are with operating variables constant.
2. System accuracy referenced to 0.1 to 10% calibrated range.