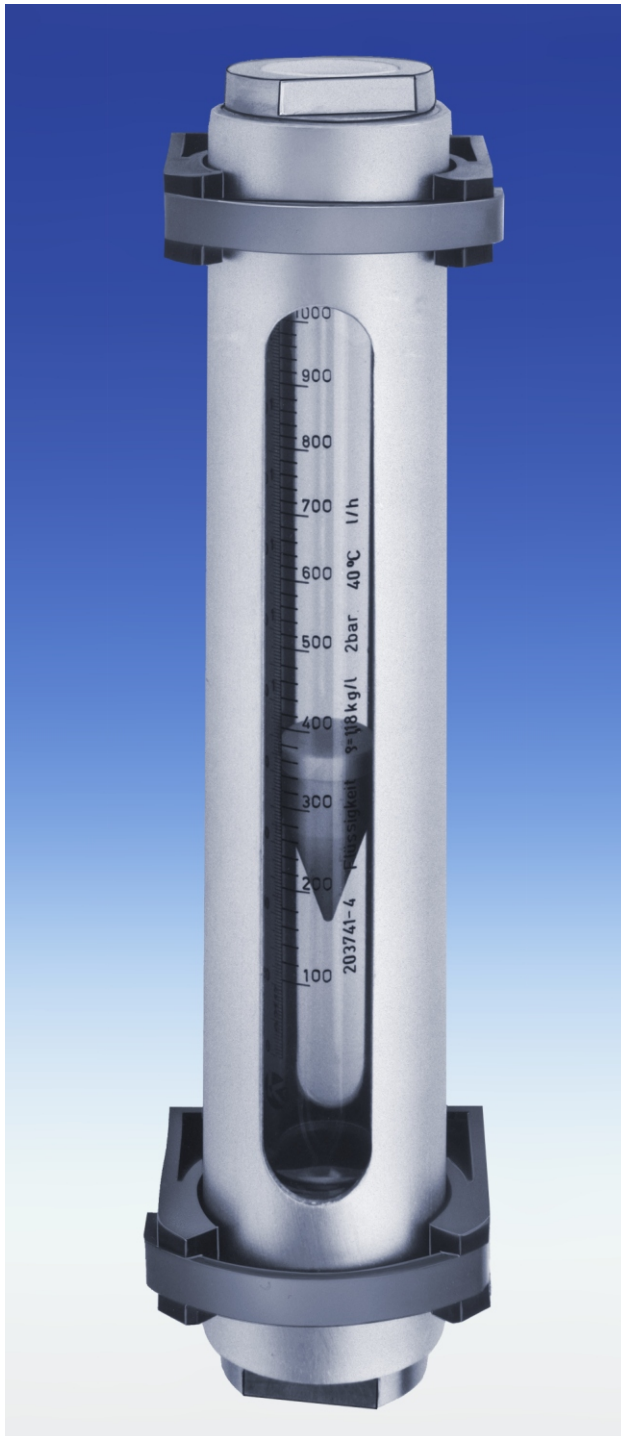


Safety Flow Meter S - SM



Handling hazardous liquids or gases requires the use of flow meters with the vulnerable parts such as the metering glass protected against breakage.

The S - SM safety flow meter provides sealed protection glass around the metering glass and an outer stainless steel shell with a sight window.

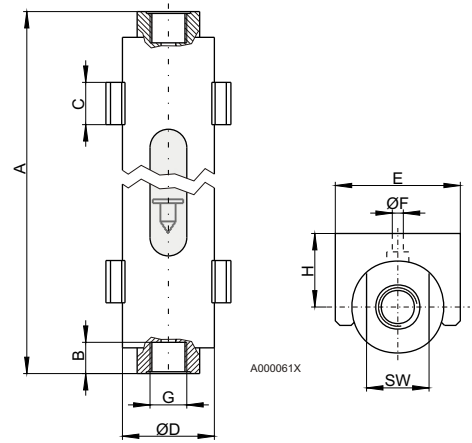
A variety of construction materials is available to meet any specific application.

- Rugged protection
- Large range of applications
- High safety standard

Technical Data

Metering range:	See table*
Metering cone:	Glass, Hastelloy, SS or PTFE
Endcaps:	PTFE, SS or titanium
Support:	Bracket made of plastic

$$* \text{Operating pressure max. [bar]} = 10 - \frac{\text{operating temperature max. [}^\circ\text{C]} - 20}{10}$$



Type	A	B	C	ØD	E	ØF	G	H	SW	kg	Operating pressure* max. at 20°C	Operating temperature* max. at 2bar
S-SM 3-1	197	17	17	25	42	5,5	1/4"NPT	27	22	0.9	10 bar	100 °C
S-SM 4	368	17	23	50	68	6	G 1/2"	40	36	2.8	10 bar	100 °C
S-SM 4-1	368	17	23	50	68	6	G 1/2"	40	36	2.8	10 bar	100 °C
S-SM 5	370	25	23	70	95	6	G 1"	58	46	4	10 bar	100 °C

Table of Typical Ranges

Flow meter S-SM 3-1

Media:	Air	Water
Pressure:	+ 1.2 bar abs.	
Temperature:	+ 20 °C	+ 20 °C
	1,6 - 16 NI/h	0.25 - 2.5 l/h
	4 - 40 NI/h	0.5 - 5 l/h
	6 - 60 NI/h	1.2 - 12 l/h
	10 - 100 NI/h	2.5 - 25 l/h
	25 - 250 NI/h	4 - 40 l/h
	50 - 500 NI/h	6 - 60 l/h
	80 - 800 NI/h	10 - 100 l/h

Flow meter S-SM 4 / S-SM 4-1

Media:	Air	Water
Pressure:	+ 1.2 bar abs.	
Temperature:	+ 20 °C	+ 20 °C
	250 - 2500 NI/h	6.3 - 63 l/h
	400 - 4000 NI/h	10 - 100 l/h
	500 - 5000 NI/h	16 - 160 l/h
	800 - 8000 NI/h	25 - 250 l/h
		40 - 400 l/h
		63 - 630 l/h

Flow meter S-SM 5

Media:	Air	Water
Pressure:	+ 1.2 bar abs.	
Temperature:	+ 20 °C	+ 20 °C
	1000 - 10000 NI/h	25 - 250 l/h
	1600 - 16000 NI/h	40 - 400 l/h
	2000 - 20000 NI/h	63 - 630 l/h
	3000 - 30000 NI/h	100 - 1000 l/h
		160 - 1600 l/h
		250 - 2500 l/h



Application in explosive atmosphere:

There is no Ex-designation on the type plate of the equipment, because they are not within the scope of European Directive 94/9/EC. However the equipment corresponds to the essential requirements of the Directive 94/9/EC. Therefore they can be used in explosive atmosphere (**Zone 1 , Group IIC**).
Regard the indications of the Installation- and Operation-Instruction.

Please indicate with order

Part no.	Description	
40 22 999	Flow meter S-SM 3-1	Endcaps: SS 1.4571
40 23 999	Flow meter S-SM 3-1	Endcaps: titanium
40 24 999	Flow meter S-SM 4	Endcaps: SS 1.4571 / PTFE
40 25 999	Flow meter S-SM 4-1	Endcaps: SS 1.4571
40 26 999	Flow meter S-SM 5	Endcaps: SS 1.4571